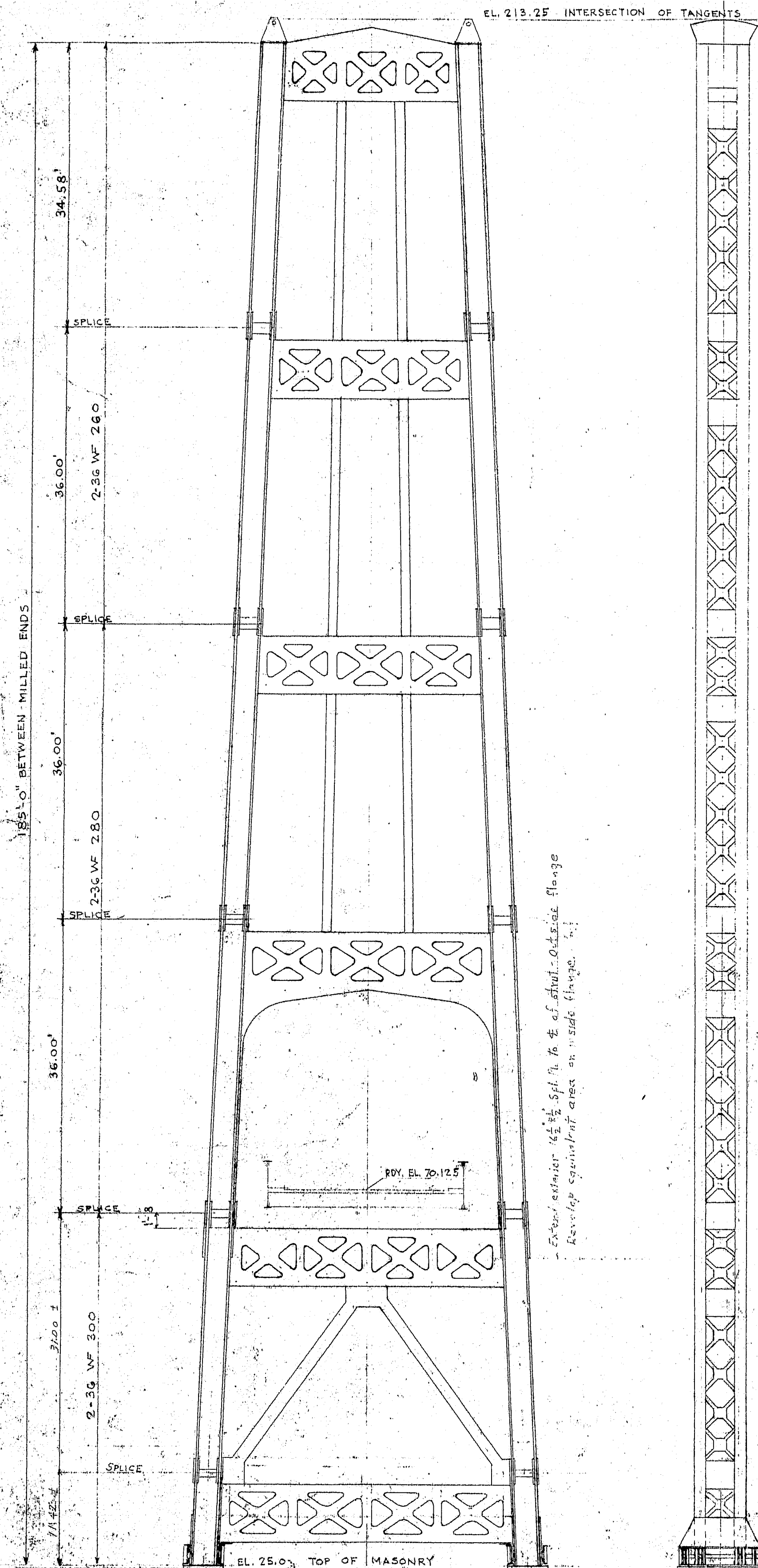


Estimated Weight  
Towers 80,000  
Roadway 10,000  
Total 90,000

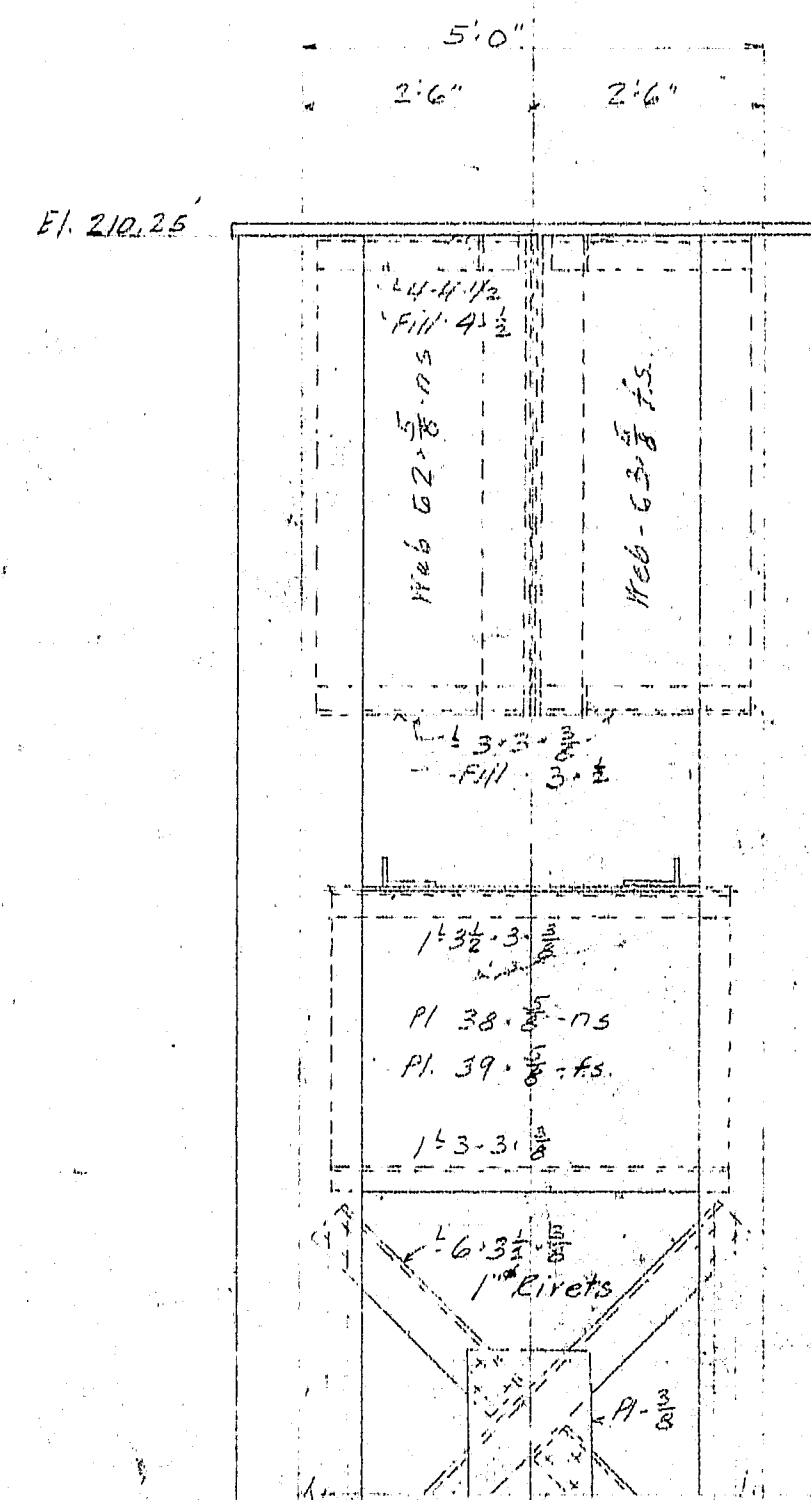
RS 3310 - 5103



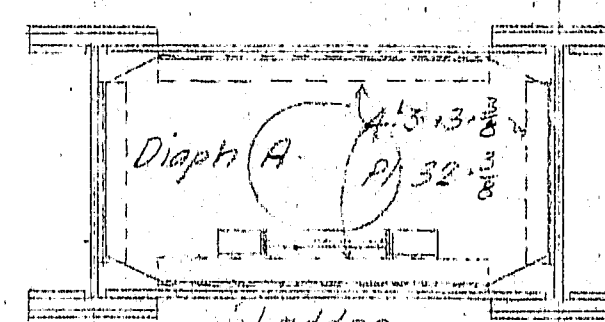
BASE  
WING PLS. 72 x 8 x 10'-0"  
BASE IS 8'-8"  
STEP IS 7'-3 1/2" x 7'-0"  
SLAB 55 x 3 x 10'-2"  
10 ANCHORS PER COL.  
12 x 12 x 1 ANCHOR PLS.  
6'-4" x 1/2" WASHER

SCALE 1" = 1'-0"

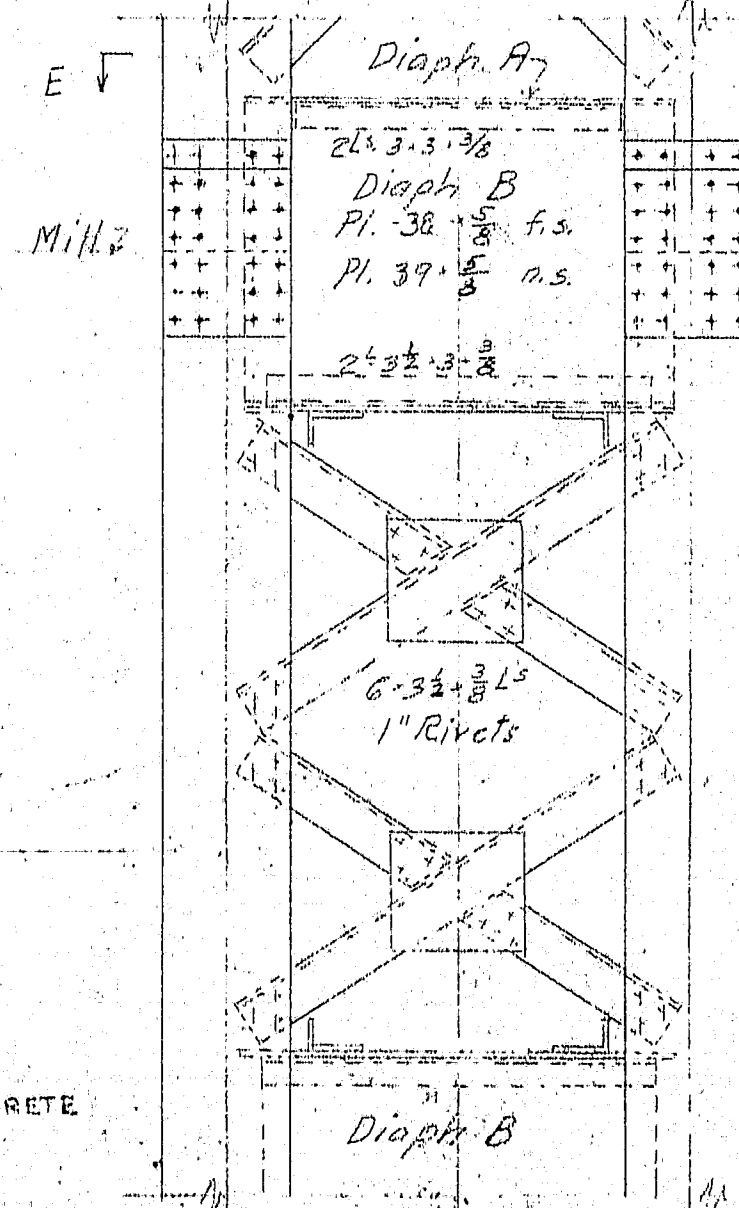
DIAPH.  
FILL BASE  
WITH CONCRETE



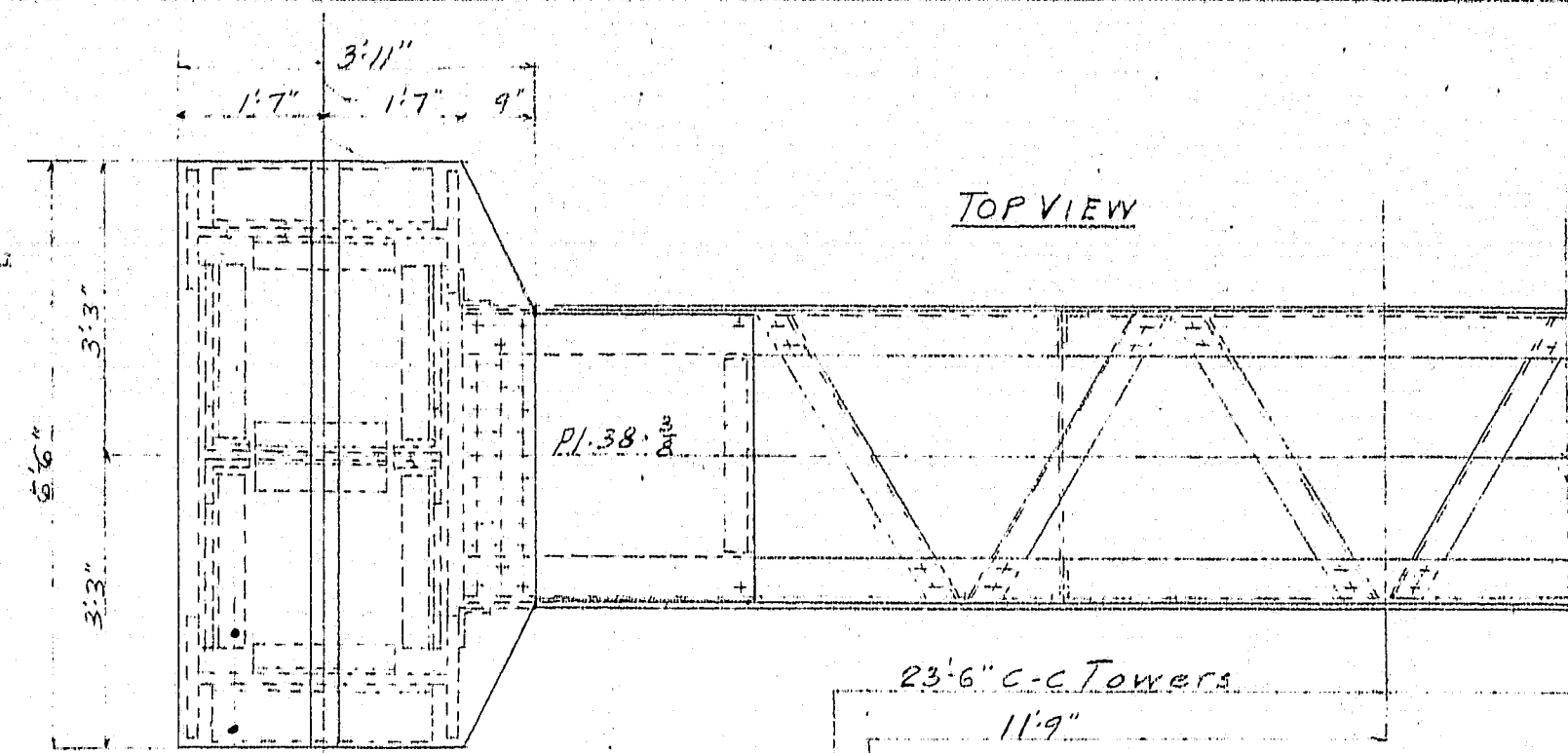
VIEW D-D



SECTION E-E

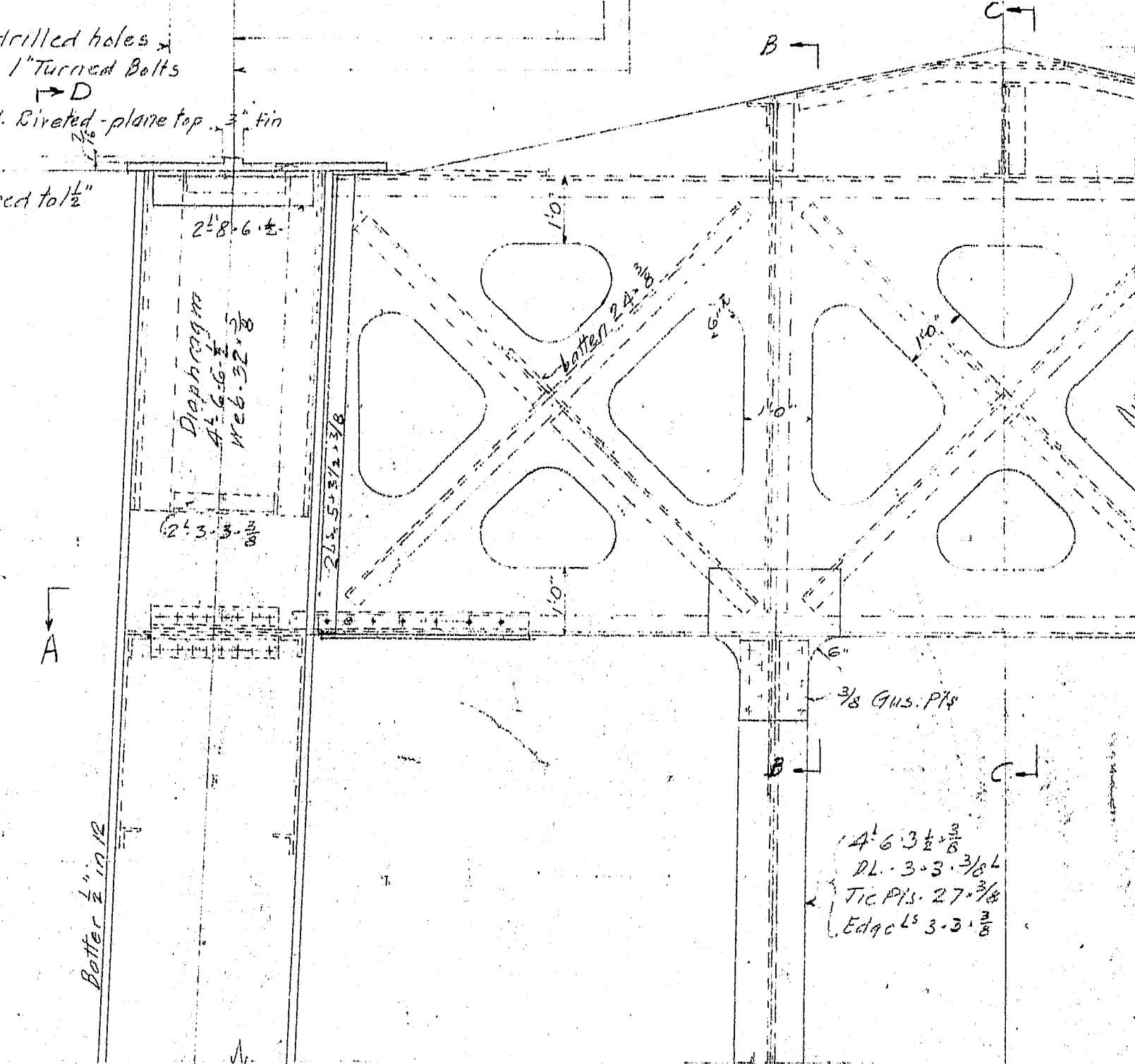


TYPICAL STRUT INTERSECTION AND COL. SPLICE

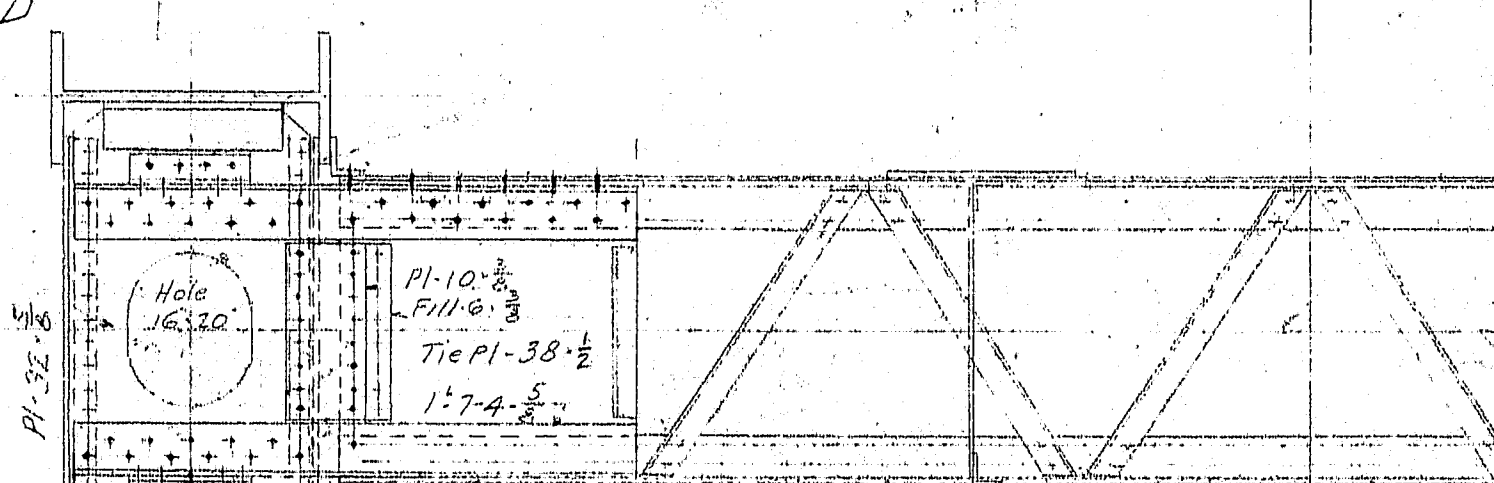


TOP VIEW

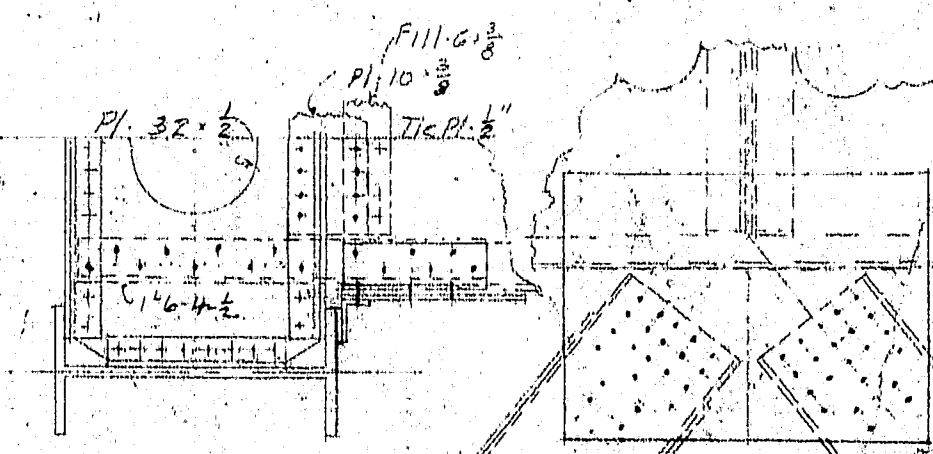
All Struts  
2 1/2 x 3 1/2 x 3/8  
2 Webs 3/8  
Diagonals 1 1/2 x 3 1/2 x 3/8  
SL 1 1/2 x 3 1/2 x 3/8



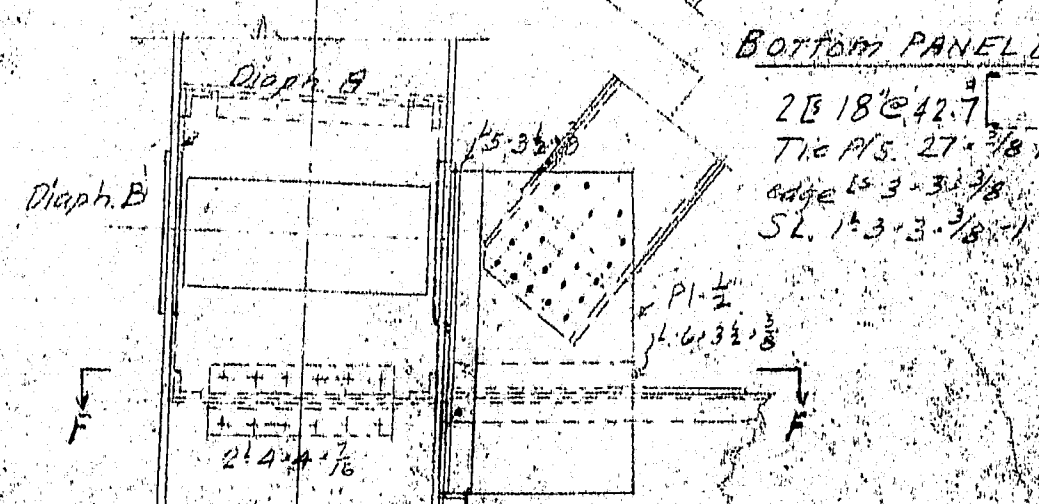
SECTION A-A  
TYPICAL CONNECTION



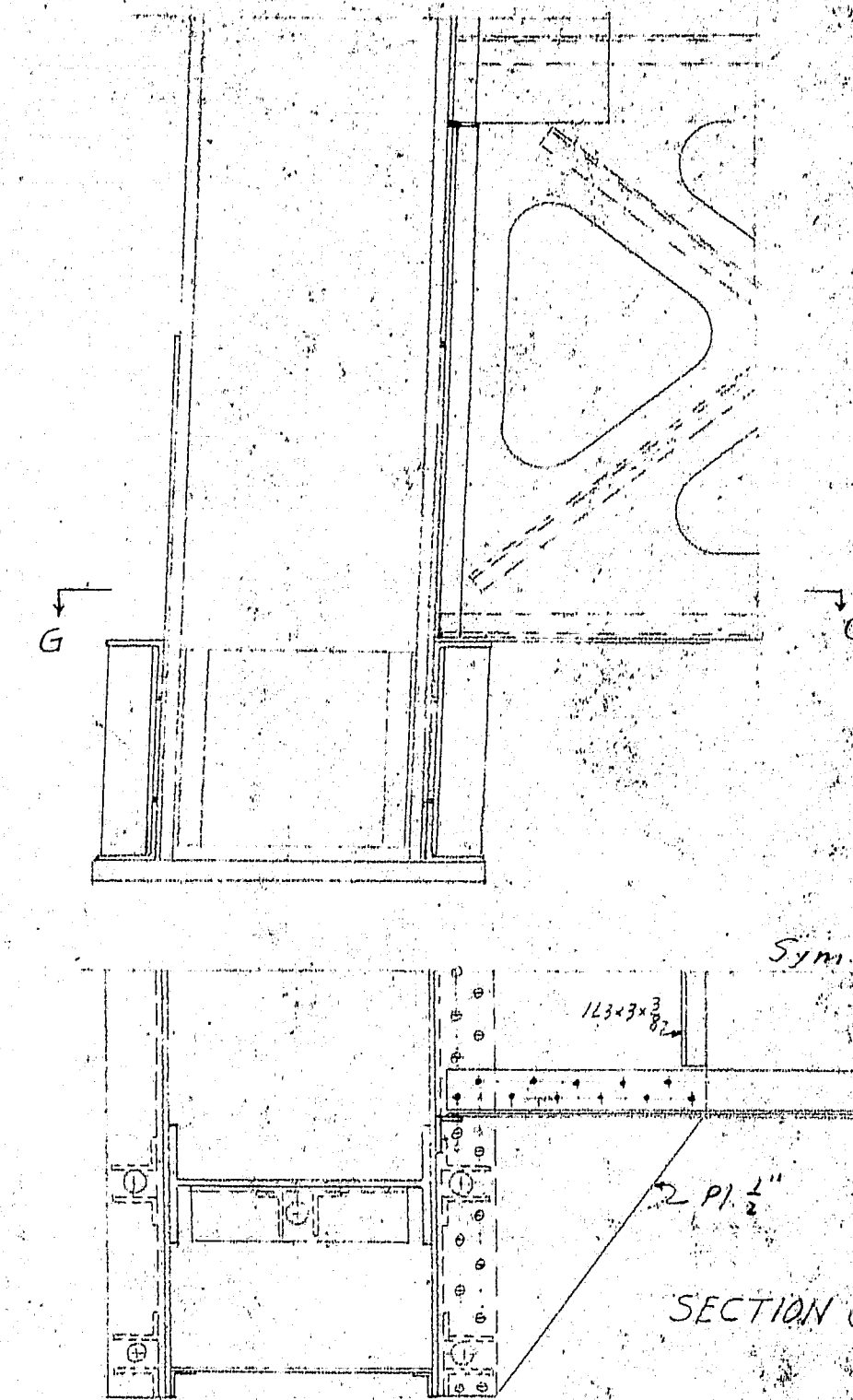
SECTION B-B



SECTION F-F



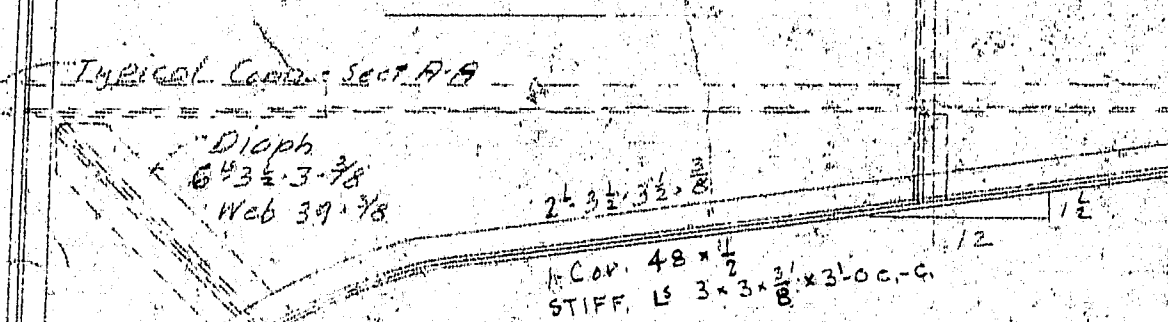
BOTTOM PANEL BEARING



SECTION G-G

HALF SECTION C-C

HALF SECTION B-B



HALF ELEVATION OF PORTAL  
Scale 1/2" = 1'-0"

Rivets 3" unless noted  
Open Holes 1/2" unless noted

REVISIONS  
1-7-38 Tower splices at Roadway Level.  
Lower bottom tower strut and  
change section of Diagonal Bracing  
1-14-38 Addition of Section G-G  
7-24-37 Replied no built

SUPERSTRUCTURE

PWA PROJECT NO. ME 1010D

DEER ISLE SEDGWICK BRIDGE DISTRICT  
BRIDGE OVER EGGMOGIN REACH  
FROM LITTLE DEER ISLE TO SEDGWICK  
HANCOCK COUNTY, MAINE

MAIN TOWERS

ROBINSON AND STEINMAN  
ENGINEERS  
NEW YORK CITY

SCALES AS NOTED  
DRAWING NO. RS 3310  
SEPTEMBER

124-17

